

LOCKING KNEE



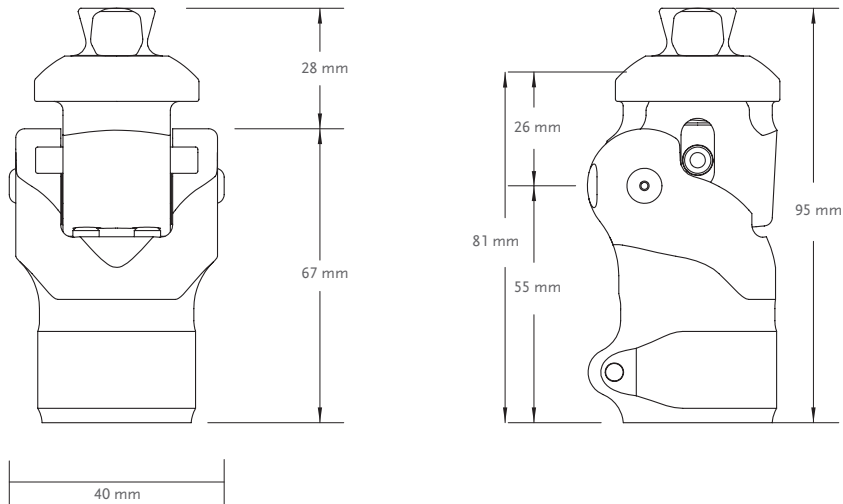
Locking Knee from Össur is a simple, reliable and lightweight knee joint for the low active amputee.
Locking Knee is intended to be used during rehabilitation and as a permanent solution with the low active amputee.

| Patient Profile: | |
|-------------------------|----------------|
| Amputation Level: | Transfemoral |
| Impact Level: | Low |
| Maximum Patient Weight: | 125kg (275lbs) |

| Product Information: | |
|----------------------|-------------------|
| Knee Axis Height: | 26mm (1 1/32") |
| Weight of Knee: | 0.248kg (0.55lbs) |
| Flexion: | Stop at 140° |



CLEARANCE



KITS

| Part# | Description |
|----------|--------------|
| LKN12500 | Locking Knee |

Includes:
• Lanyard Kit

| Part# | Description |
|----------|---------------------|
| LKN12590 | Lanyard Release Kit |